

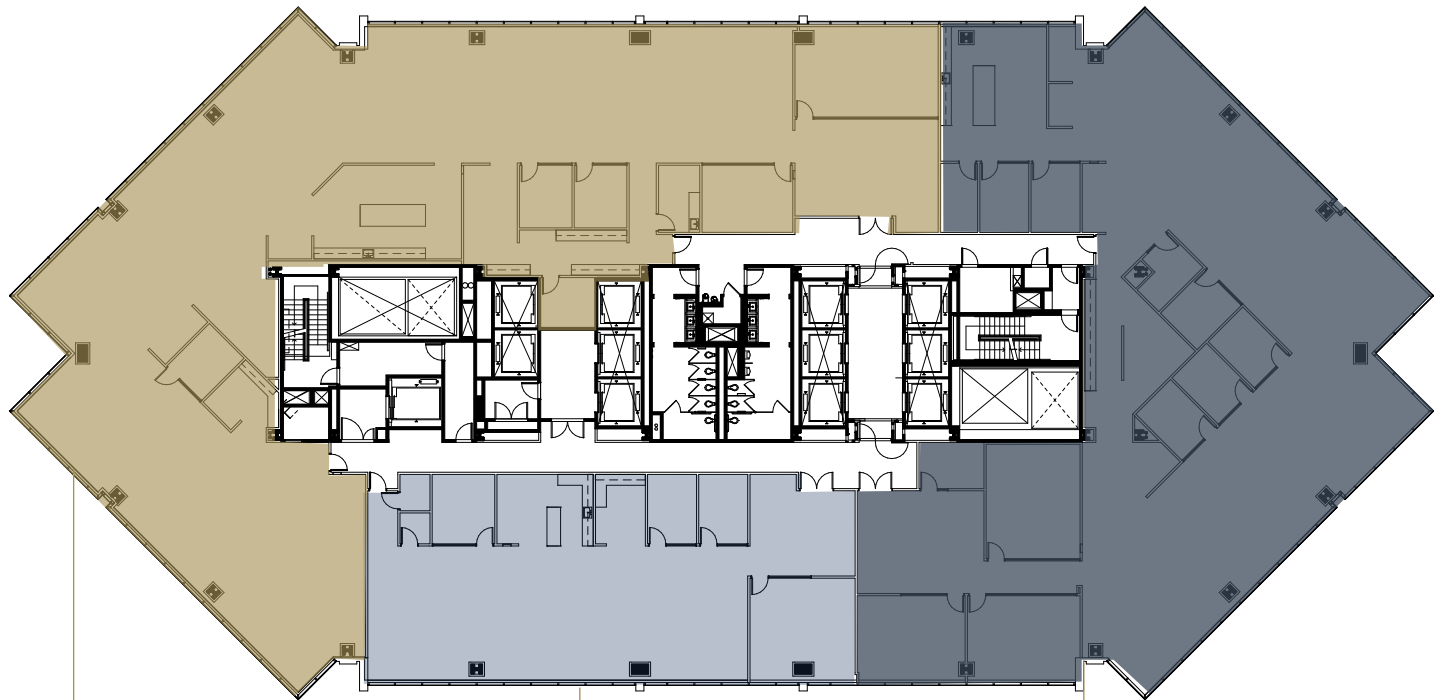
view

AVAILABILITIES



601citycenter.com

FLOOR 3 — SPEC SUITES AVAILABLE IN OCTOBER 2020



○ SUITE 300
12,478 SF
DESKS: 30"X60", 97
OFFICES: 3
CONFERENCE ROOMS: 1
SCRUM SEATS: 11
PHONE SEATS: 6

○ SUITE 325
4,632 SF
DESKS: 30"X60" 33
OFFICES: 2
CONFERENCE ROOMS: 2

○ SUITE 350
10,661 SF
DESKS: 30"X60" 64
OFFICES: 6
CONFERENCE ROOMS: 3
SCRUM SEATS: 10
PHONE SEATS: 2

JOHN DOLBY

Executive Director

+1 510 267 6027

john.dolby@cushwake.com

LIC #00870630

MARK ANDERSON

Vice Chairman

+1 415 773 3583

mark.anderson@cushwake.com

LIC #01325399

TOM MCDONNELL

Senior Vice President Leasing

+1 415 772 7086

tmcdonnell@shorenstein.com

LIC #01011145



cushmanwakefield.com

view

AVAILABILITIES



601citycenter.com

FLOOR 3 — SPEC SUITES AVAILABLE IN OCTOBER 2020



○ SUITE 300
12,478 SF
DESKS: 30"X60", 97
OFFICES: 3
CONFERENCE ROOMS: 1
SCRUM SEATS: 11
PHONE SEATS: 6

○ SUITE 325
4,632 SF
DESKS: 30"X60" 33
OFFICES: 2
CONFERENCE ROOMS: 2

○ SUITE 350
10,661 SF
DESKS: 30"X60" 64
OFFICES: 6
CONFERENCE ROOMS: 3
SCRUM SEATS: 10
PHONE SEATS: 2

JOHN DOLBY

Executive Director
+1 510 267 6027
john.dolby@cushwake.com
LIC #00870630

MARK ANDERSON

Vice Chairman
+1 415 773 3583
mark.anderson@cushwake.com
LIC #01325399

TOM MCDONNELL

Senior Vice President Leasing
+1 415 772 7086
tmcdonnell@shorenstein.com
LIC #01011145



cushmanwakefield.com